



**HYDRA CONSULT**  
INTERNATIONAL



HYDRA CONSULT INTERNATIONAL AND BRANCH OFFICES ARE PART OF HS SHIP  
REPAIRS COMPANY LTD.

HYDRA CONSULT NETHERLANDS

HYDRA CONSULT  
INTERNATIONAL

HYDRA CONSULT CARIBBEAN

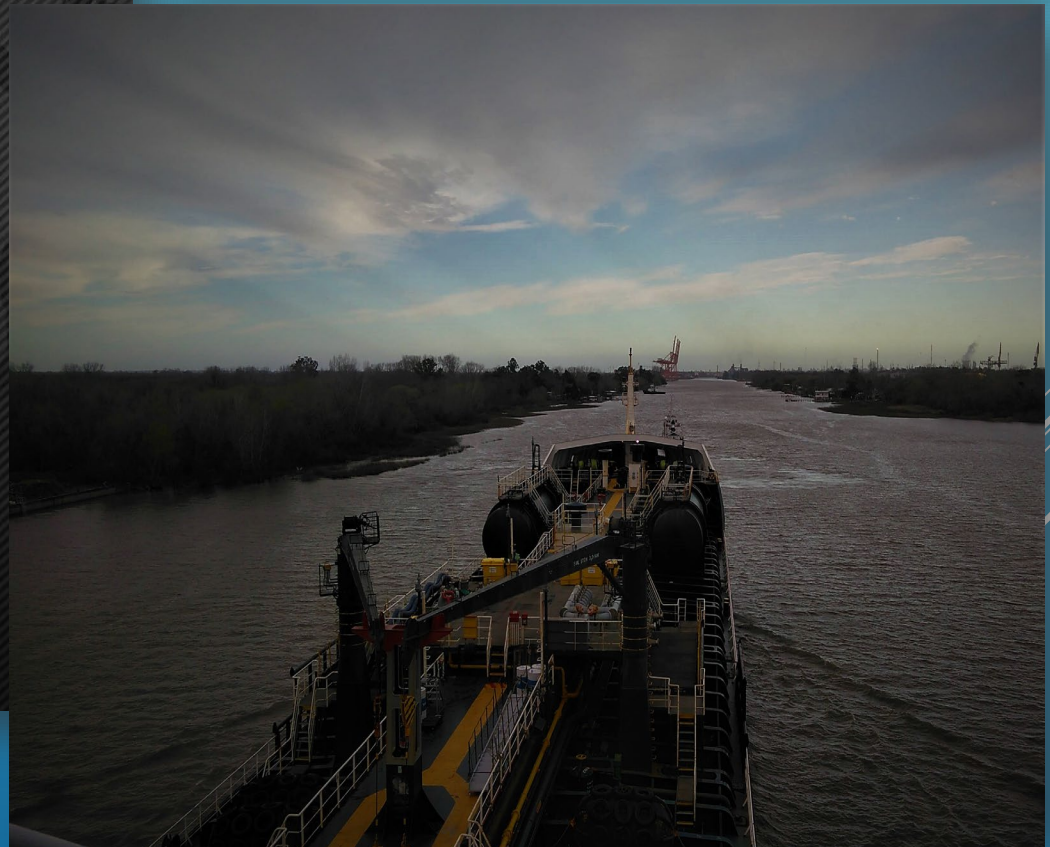
HYDRA CONSULT AFRICA

HYDRA CONSULT BRAZIL

HYDRA CONSULT ARGENTINA

HYDRA CONSULT  
INTERNATIONAL

MORE  
THAN 25 YEARS OF  
EXPERIENCE





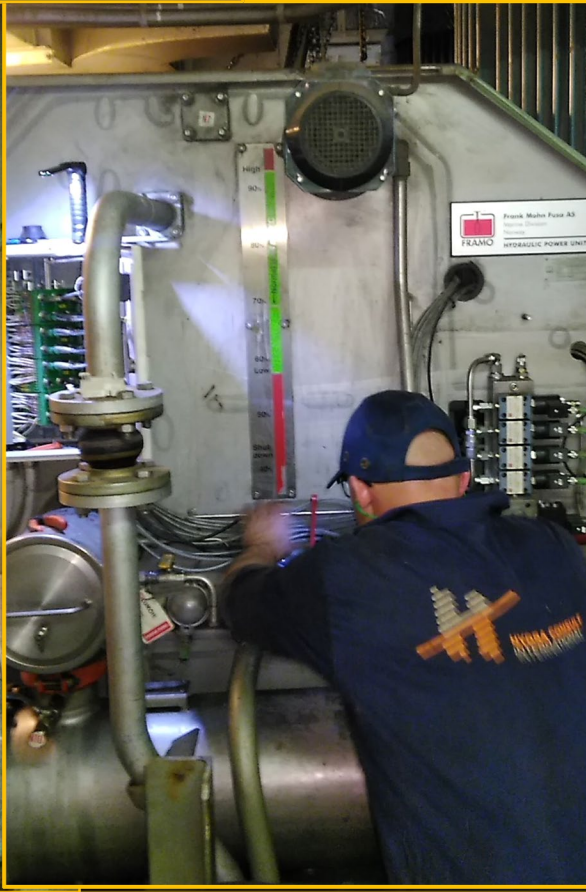
# Experience and knowledge: Over 25 years in the Ship Repair Industry

HS Ship Repairs / Hydra Consult International , [www.hydraconsultinternational.com](http://www.hydraconsultinternational.com), is a company specialist in maintenance, repair, troubleshoot of cargo and ballast pumping systems, anti-heeling systems, hydraulic piping, cargo pumping systems commissioning and hydraulic systems repairs.

Our engineers are former workers from the major manufacturers of hydraulic marine equipment. More than 25 years of experience and attending regularly to training courses. We are specialist in **FRAMO, STX KOSAKO, MARFLEX, SVANEHOJ, HAMWORTHY, BOSCH REXROTH , HG** pumping systems



**HYDRA CONSULT**  
INTERNATIONAL



We are experts in the field of Hydraulic driven cargo pumping equipment for sea-going chemical and product Tanker Vessels. We have a worldwide network established for service attendance and spare parts supply. We provide good, reliable and less cost service and parts , in order to meet the vessels and customer's needs.

With over 25 years of experience with cargo equipment, we have proven to be an independent brand and all-round supplier for parts and service for FRAMO and others cargo and ballast pumps systems.

From electrical part to the mechanical we have the best engineers to attend you.

**HYDRA CONSULT**  
INTERNATIONAL



# Wherever is needed, we'll be there

Our headquarters are in Setubal, Portugal, with branch offices in Holland , Brazil , Argentina , Nigeria and Aruba , providing fast attendance to our customers worldwide .

We attend regularly clients in Europe, South America, North and Central America, Africa and the Middle East.

Get well prepared for your up-coming dry-docking and ensure to have a clear scope of the work and values. We offer the most complete cargo and ballast pumping system inspections you can have, where is included the Cargo pump evaluation/performance test, Electrical panels and alarms tests, Purging of pumps cofferdams and oil sample analyses, Thermal and vibrations analyses. A full report with all required to plan future actions and keep your vessel always operational.

Our inspections can include all hydraulic equipment from your vessel, like Cranes, Winches, Freefall, Valves , Valves Actuators and Valves control systems , Cylinders, etc...







HYDRA CONSULT  
INTERNATIONAL



## SPARES

Hydra Consult International / HS Ship Repairs supplies an extensive range of spare parts for all **FRAMO system**, **STX KOSAKO**, Hamworthy SVANEHOJ cargo and ballast pumps. A perfect mix of original/genuine, high quality OEM and independent spare parts allow our customers to lower their OPEX without compromising their quality standard.



## CUSTOMER SUPPORT

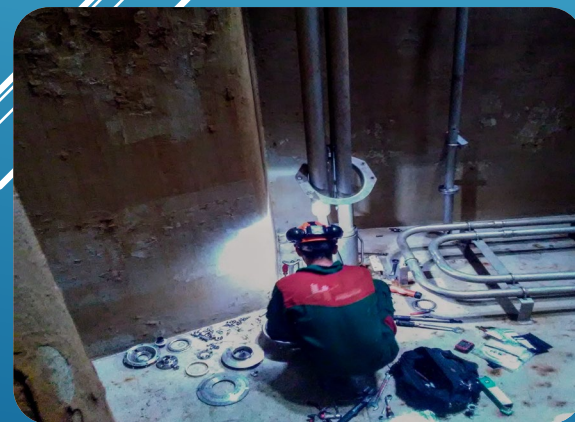
At Hydra Consult we believe that knowledge and expertise should be shared. Therefore, we provide year-round free of charge support and consultancy for crews and superintendents.

Service Engineers are 24/7 available for purging and performance test analysis, follow up by a full report with all necessary recommendations



## SERVICE

When it comes to cargo and ballast pumps, anti-heeling, bow-thrusters, etc.... excellent service is crucial for reliable onboard equipment. The service engineers from Hydra Consult are highly trained and can provide pre-docking inspections and all Dry-docking services to keep your equipment in excellent condition.



**HYDRA CONSULT**  
INTERNATIONAL



If you are looking for a perfect alternative against your current supplier, Hydra Consult International offers:

- ▶ Very good lower All- includes rates
- ▶ Compromise in quality and durability
- ▶ Excellent service by experienced Engineers
  - ▶ Guaranteed lower OPEX
- ▶ Remote support and free Consult 24/7
  - ▶ Low spare parts prices



# PRODUCTS SUPPLIED:



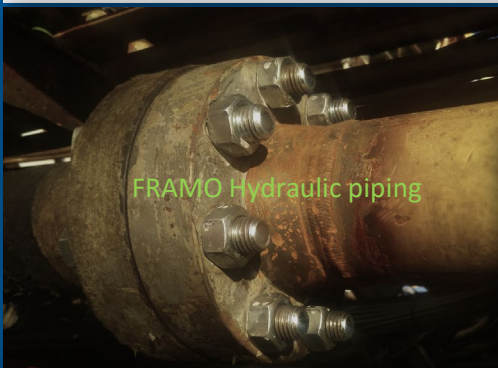
Hydraulic Pumps and motors



Cylinders



Proportional valves



FRAMO Hydraulic piping



Pilot lines and flanges



Valves  
actuators



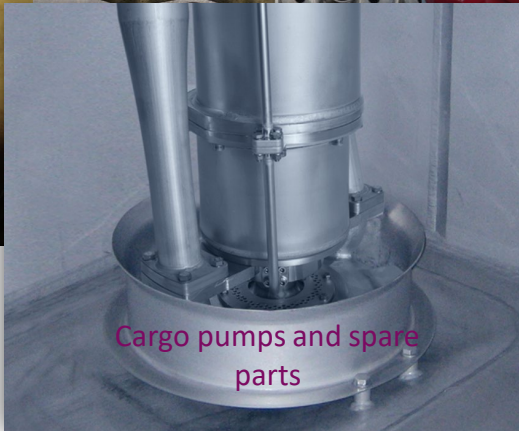
Pump parts



Pipes Flanges



Hydraulic  
controllers



Cargo pumps and spare  
parts



Manifolds with directional valves



# Ask for our **service portfolio**

We offer different service configurations that, in addition to maintenance and repairs, may also include remote support, training and consulting. Ask for details. Contacts:

- Henrique M. F. Santos (Manager Director, main office Portugal)  
[main.office@hydraconsultinternational.com](mailto:main.office@hydraconsultinternational.com)  
[commercial@hydraconsultinternational.com](mailto:commercial@hydraconsultinternational.com)
- Rene de Jong (Technical Manager Netherlands office)  
[netherlands@hydraconsultinternational.com](mailto:netherlands@hydraconsultinternational.com)  
[hydra.consult.netherlands@gmail.com](mailto:hydra.consult.netherlands@gmail.com)







Trough our partner companies we can provide Service Engineers for other brands and equipment's:

- LIFEBOATS
- CRANES
- WINCHES
- PURIFYERS
- COMPRESSORES
- ELECTRICAL EQUIPMENT
- STAINLESS STEEL PARTS MAINTENACE
- SAFETY EQUIPMENT CALIBRATION
- HULL MEASUREMENTS
- CARGO SURVEYS AND PRE-VETTING INSPECTIONS
- All type of equipment tests

OUR PARTNER COMPANIES ARE .

- ▶ GLAN SRL
- ▶ ISTECH BV
- ▶ NDT MARINE
- ▶ CAPTAIN.AR
- ▶ RC MARINE

Consult us  
for a quotation

All our engineers are certified and attend trainings regularly.  
If required ask for our certificates / diplomas

**HYDRA CONSULT**  
INTERNATIONAL



**HYDRA CONSULT**  
INTERNATIONAL

**THANK YOU**

**HENRIQUE M. F. SANTOS**  
**MANAGER DIRECTOR**

**TEL. +351 935 589677**

**[commercial@hydraconsultinternational.com](mailto:commercial@hydraconsultinternational.com)**

**[www.hydraconsultinternational.com](http://www.hydraconsultinternational.com)**